



Multi Room

MULTIELITE

Flexible and economical multi room comfort.



That's better. That's Actron.


ActronAir

ActronAir. Because Australia needs Australian air conditioning.

MULTIELITE

The year 1984 saw Advance Australia Fair become our National Anthem, the 1 dollar coin come into circulation and a small family air conditioning business open its doors. Today, ActronAir is a proud Australian company recognised for making world class air conditioners. Well, it stands to reason. The team at ActronAir experience the harsh Australian conditions first hand, and our climate places demands on air conditioning not found in other parts of the world.

And that's why ActronAir's engineers have developed the most advanced air conditioning systems specifically for the unique and harsh Australian environment.

Engineered with a superior operating range from -25°C to 50°C, and a host of innovative features, ActronAir's MultiElite multi split system is engineered to withstand the most extreme conditions Australia can throw at it.

Share the comfort with the MultiElite multi split system

A single wall split air conditioning unit is great for a single room, however, if you need multiple rooms air conditioned, then you need to consider the MultiElite multi split system.

The beauty of our MultiElite is that it allows up to five individual air conditioning heads to be installed throughout your home, office or retail space, using just the one outdoor unit.




**More than
a quarter of a
million Aussies
take comfort in
ActronAir**



A superior operating range suited for Australia

Most overseas air conditioners are only designed with a maximum temperature range of 43°C to 46°C. The MultiElite multi split system operates up to 50°C. Big deal? Well yes.

The temperature around the outdoor unit can reach far higher than what they're saying on the weather report due to direct sun or heat radiating off the ground. They're often located against a wall or fence where there's low air circulation.

“ Nothing beats performing under extremes. Engineered for Australia, you can trust ActronAir to be there when you need it most. ”

Mark 'Frosty' Winterbottom
V8 Supercars Champion & ActronAir Brand Ambassador

Celebrate differences



Different temperatures in different rooms

In a multiple room environment not everyone's preferred temperature is the same. Our MultiElite allows for different temperatures in different rooms at the same time.

Engineered with you in mind



Easy installation and commissioning

The MultiElite comes standard with a number of features to ensure installation is carried out with ease and accuracy. An additional service valve allows for quicker commissioning, while auto wiring correction eliminates any wiring errors, allowing your ActronAir installer to have you in superb comfort in a flash, saving time and money.

Choice and convenience



Capacity to suit your needs

The MultiElite has outdoor capacities ranging from 7.1kW to 13.5kW. The 7.1kW can connect up to 3 heads while the 13.5kW can connect up to 5 heads. These all connect to a single outdoor unit allowing for a better use of energy and space.



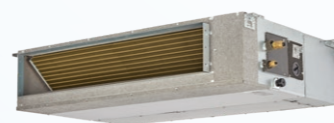
Here for the long haul



Protect your investment

ActronAir now uses gold fin epoxy coated protection on both indoor and outdoor coils as standard. This is to further reduce corrosion from the harsh Australian conditions, as well as assisting the defrosting process, thus improving heating efficiency.

MultiElite indoor unit options



Bulkhead



Serene Series 2 Wall Hung Split



Mini-Cassette

Pick up where you left off



Auto-restart

Blackout? No problem. MultiElite's auto-restart function means it restarts automatically in its last programmed setting once power is restored, which means you don't have to spend unnecessary time reprogramming your system.

Better Control



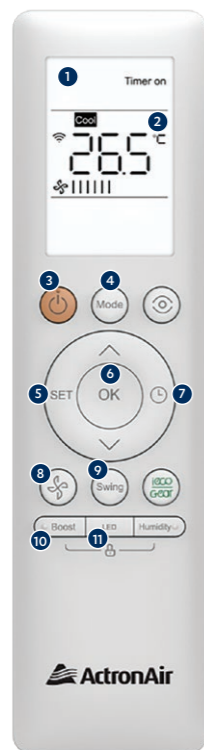
Better control in your hand...

MultiElite's remote controllers; WRE2621 (not compatible with Serene Series 2) and RC-02 (not compatible with Bulkhead and Mini Cassette) features a large screen and buttons for more logical and legible daily use.



Remote controller

WRE2621



Remote controller

RC-02

- ❶ White backlight
- ❷ Large, easy to read display
- ❸ ON/OFF
- ❹ Mode
- ❺ Feature setting menu
- ❻ Option confirm
- ❼ Timer
- ❽ Fan mode

- ❾ Louvre control
- ❿ Boost mode
- ⓫ LED display ON/OFF
- ⓬ Sleep/Quiet mode
- ⓭ Follow Me
- ⓮ Clock
- ⓯ Turbo Mode

...and on the wall

For those who like a little more control, or who just keep losing the remote, MultiElite can also use a wall mounted wired controller that delivers precise temperature control.



Optional wired wall controller

- ❶ White backlight
- ❷ Large, easy to read display
- ❸ Timer
- ❹ Mode
- ❺ Simple, easy to read buttons
- ❻ ON/OFF
- ❼ Onboard sensor

WRE2621 remote controller is compatible with Bulkhead & Mini Cassette – RC-02 remote controller is only compatible with Serene Series 2.
Some Serene Series 2.13 features not compatible with MultiElite, refer to features list for full details.
Wired wall controller comes standard with Bulkhead indoor unit. Available as an optional upgrade for Serene Series 2 and Mini-Cassette indoor unit.

Better Comfort

Follow me for a more attuned temperature

In most air conditioners, the temperature sensor is in the indoor unit. With MultiElite, we have put additional sensors inside the remote controller and wired wall controller. With the remote controller, when you press the Follow Me button you'll have the temperature you want, wherever you are in the room. When it comes to the wired wall controller, you'll have more precise temperature control and comfort at its location.

One of the great things with MultiElite is that you can pre-set your favourite comfort levels. This means that you can simply select these settings with the touch of a button on your remote.

Shhh. Quiet mode in operation

For a good night's sleep, or if you simply seek silence, the MultiElite system has a quiet mode* that reduces indoor unit noise to a whisper-quiet level (between 20 and 30 decibels).#



Set your comfort remotely

The optional EasyConnect upgrade allows you to control your Serene system wirelessly via your smart device. Cool your home down as you leave work or check you've turned off the air conditioning. It's all in the palm of your hand.



easyconnect



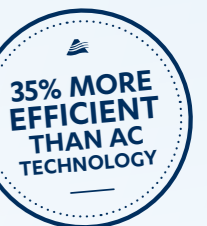
Better Engineered

AC vs DC for rockin' efficiency and performance

The MultiElite system uses ultra-energy-efficient DC, or direct current, inverter technology in its inverter compressor, indoor fans and outdoor fans. Some companies use less efficient AC technology, or combinations of both. This can make a significant difference to your electricity bill.

With an impressive 25 frequency stages, our inverter compressor is up to 35% more efficient than AC technology, while our upgraded DC outdoor fan with five speed settings is up to 40% more efficient. The result is improved efficiencies overall, as well as optimal cooling performance.

*Quiet mode available on Serene and Mini Cassette only.
#Based on models up to 5kW.



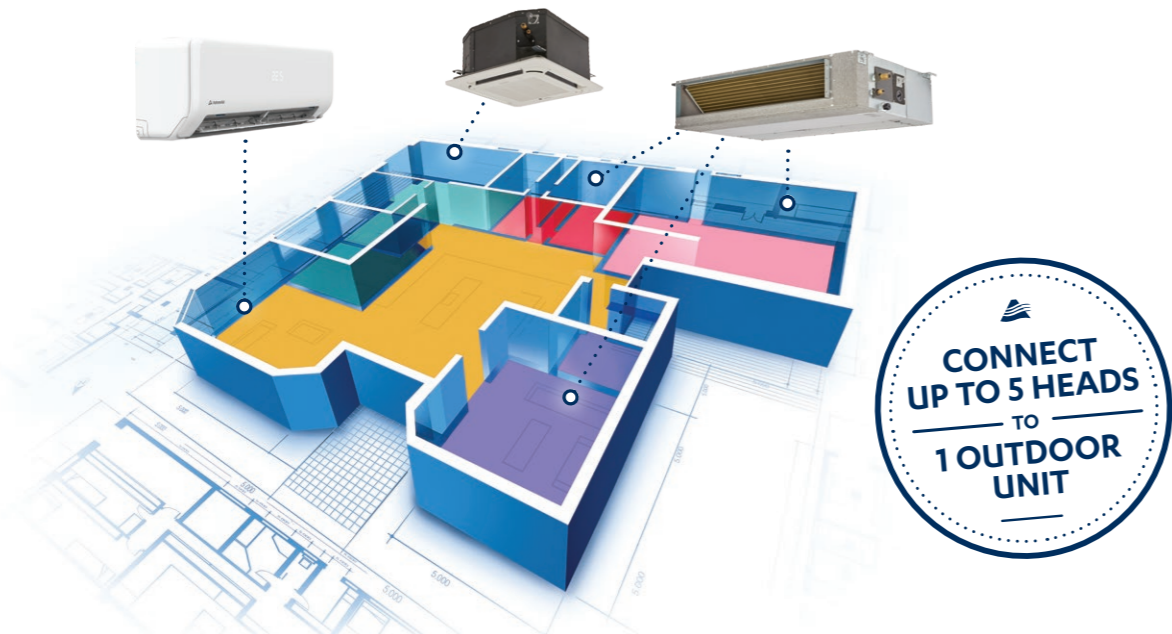


The answer’s easier **with multiple choice**

When there’s more than one room and more than one configuration to consider, the MultiElite simply provides more solutions to meet your needs.

Our MultiElite multi-split system allows you to run up to five indoor units through a single outdoor unit. That’s smart, because it can save not only space, but also energy. And while its powerful enough to keep the whole home in air conditioned comfort, MultiElite’s DC inverter can also ramp right down to power a single room. MultiElite also allows you to pick the best solution for specific rooms, whether it’s a concealed bulkhead system, Mini-Cassette or the ever popular wall mounted systems.

With its choice of multiple indoor units, MultiElite also minimises those family fights over the thermostat, as you can have different temperatures in different rooms at the same time. Now that’s better living!



Better Service

Local service you can count on

Our National Service Network has service staff on the ground and parts on the shelves. They’re friendly, reliable and prompt. Furthermore, ActronAir’s 5 year warranty will keep you comfortable with absolute peace of mind.

MultiElite Combination Matrix

Outdoor Unit Models	MRC-071AS-3 7.10 kW	One Unit	Two Units	Three Units	Four Units	Five Units
		2.6	2.6+2.6	2.6+2.6+2.6	–	–
		3.5	2.6+3.5	2.6+2.6+3.5	–	–
		5	2.6+5	2.6+2.6+5	–	–
		7.1	2.6+7.1	2.6+3.5+3.5	–	–
		–	3.5+3.5	2.6+3.5+5	–	–
		–	3.5+5	3.5+3.5+3.5	–	–
		–	3.5+7.1	–	–	–
	–	5+5	–	–	–	
	MRC-100AS-4 9.85 kW	One Unit	Two Units	Three Units	Four Units	Five Units
		2.6	2.6+2.6	2.6+2.6+2.6	2.6+2.6+2.6+2.6	–
		3.5	2.6+3.5	2.6+2.6+3.5	2.6+2.6+2.6+3.5	–
		5	2.6+5	2.6+2.6+5	–	–
7.1		3.5+3.5	2.6+3.5+3.5	–	–	
–		2.6+7.1	2.6+3.5+5	–	–	
–		3.5+5	3.5+3.5+3.5	–	–	
–		3.5+7.1	–	–	–	
–	5+5	–	–	–		
MRC-110AS-5 10.95 kW	One Unit	Two Units	Three Units	Four Units	Five Units	
	2.6	2.6+2.6	2.6+2.6+2.6	2.6+2.6+2.6+2.6	2.6+2.6+2.6+2.6+2.6	
	3.5	2.6+3.5	2.6+2.6+3.5	2.6+2.6+2.6+3.5	2.6+2.6+2.6+2.6+3.5	
	5	2.6+5	2.6+2.6+5	2.6+2.6+2.6+5	2.6+2.6+2.6+3.5+3.5	
	7.1	2.6+7.1	2.6+2.6+7.1	2.6+2.6+3.5+3.5	–	
	–	3.5+3.5	2.6+3.5+3.5	2.6+2.6+3.5+5	–	
	–	3.5+5	2.6+3.5+5	2.6+3.5+3.5+3.5	–	
	–	3.5+7.1	2.6+3.5+7.1	3.5+3.5+3.5+3.5	–	
	–	5+5	2.6+5+5	–	–	
	–	5+7.1	3.5+3.5+3.5	–	–	
	–	7.1+7.1	3.5+3.5+5	–	–	
	–	–	3.5+3.5+7.1	–	–	
–	–	3.5+5+5	–	–		
MRC-135AS-5 13.50 kW	One Unit	Two Units	Three Units	Four Units	Five Units	
	2.6	2.6+2.6	2.6+2.6+2.6	2.6+2.6+2.6+2.6	2.6+2.6+2.6+2.6+2.6	
	3.5	2.6+3.5	2.6+2.6+3.5	2.6+2.6+2.6+3.5	2.6+2.6+2.6+2.6+3.5	
	5	2.6+5	2.6+2.6+5	2.6+2.6+2.6+5	2.6+2.6+2.6+2.6+5	
	7.1	2.6+7.1	2.6+2.6+7.1	2.6+2.6+2.6+7.1	2.6+2.6+2.6+3.5+3.5	
	–	3.5+3.5	2.6+3.5+3.5	2.6+2.6+3.5+3.5	2.6+2.6+2.6+3.5+5	
	–	3.5+5	2.6+3.5+5	2.6+2.6+3.5+5	2.6+2.6+3.5+3.5+3.5	
	–	3.5+7.1	2.6+3.5+7.1	2.6+2.6+3.5+7.1	2.6+2.6+3.5+3.5+5	
	–	5+5	2.6+5+5	2.6+2.6+5+5	2.6+3.5+3.5+3.5+3.5	
	–	5+7.1	3.5+3.5+3.5	2.6+2.6+5+7.1	2.6+3.5+3.5+3.5+5	
	–	7.1+7.1	3.5+3.5+5	2.6+3.5+3.5+3.5	3.5+3.5+3.5+3.5+3.5	
	–	–	3.5+3.5+7.1	2.6+3.5+3.5+5	–	
	–	–	3.5+5+5	3.5+3.5+3.5+3.5	–	
–	–	–	3.5+3.5+3.5+5	–		

NOTE: Where the chart references 7.1 in product combinations, Serene Series 2 '7.2kW' systems are compatible in place. For actual capacities on the above combinations, please refer to the ActronAir technical catalogue.

Technical Specifications

Multi Split System 7.10-13.50kW (Single Phase)

Technical Information					
OUTDOOR MODEL		MRC-071AS-3	MRC-100AS-4	MRC-110AS-5	MRC-135AS-5
APPLICABLE INDOOR MODEL/S	Wall Hung	WRE-026CS	WRE-026CS	WRE-026CS	WRE-026CS
		WRE-035CS	WRE-035CS	WRE-035CS	WRE-035CS
		WRE-050CS	WRE-050CS	WRE-050CS	WRE-050CS
		WRE-072CS	WRE-072CS	WRE-072CS	WRE-072CS
		BRE-026BS	BRE-026BS	BRE-026BS	BRE-026BS
	Bulkhead	BRE-035BS	BRE-035BS	BRE-035BS	BRE-035BS
		BRE-052BS	BRE-052BS	BRE-052BS	BRE-052BS
		BRE-071BS	BRE-071BS	BRE-071BS	BRE-071BS
		MRE-035AS	MRE-035AS	MRE-035AS	MRE-035AS
	Mini-Cassette	MRE-050AS	MRE-050AS	MRE-050AS	MRE-050AS
Nett (Rated) Capacity (kW) (AS/NZS3823.1.4)	Cooling (min - max)	7.10	9.85	10.95	13.50
	Heating (min - max)	7.75	9.90	11.20	14.80
Input Power (kW) (AS/NZS3823.1.4)	Cooling Rated	1.99	2.48	3.00	3.82
	Heating Rated	1.92	2.58	2.80	4.17
¹ EER Rated (AS/NZS3823.1.4)	Cooling Rated	3.57	3.97	3.65	3.53
² COP Rated (AS/NZS3823.1.4)	Heating Rated	4.04	3.84	4.00	3.55
Power Supply - (V / Ph / Hz)	Outdoor	220 - 240 V / 1Ph+N / 50Hz			
Rated Load Amps (AS/NZS3823.1.4)	Cooling	8.8	10.9	13.2	16.8
	Heating	8.5	11.4	12.4	18.3
Full Load Amps	³ Maximum possible combination	18.4	20.8	27.0	32.1
	Outdoor Unit Only	14.5	16.0	21.0	25.8
⁴ Circuit Breaker Amps and Main Cable Amps		Calculate based on installed combination and refer to AS/NZS3000 for correct size			
⁵ Suggested Minimum Indoor to Outdoor Cable Size & Type		1.0mm ² 3 Core + Earth	1.0mm ² 3 Core + Earth	1.0mm ² 3 Core + Earth	1.0mm ² 3 Core + Earth
IP Rating	Outdoor	IP24	IP24	IP24	IP24
Compressor Type		Inverter Twin-Rotary			
Refrigerant		R410A			
Outdoor Dimensions (mm)	Depth	410	410	410	415
	Height	810	810	810	1333
	Width	946	946	946	952
⁶ Nominal Weight (kgs)	Outdoor	67	71	77	102
⁷ Outdoor Sound Pressure Level (dBA) 1m		61	61	65	65
⁸ Outdoor Sound Power Level (dBA)		69	69	73	73
Outdoor Operating Range (°C)	Cooling	-15°C to 50°C			
	Heating	-25°C to 30°C			
MEPS Compliant		Yes	Yes	Yes	Yes
⁹ Demand Response Capability (AS4755.3)		Capable			

Field Piping and Connections					
Refrigerant Charge	Factory Charge - (g)	2620	3300	3980	4980
	Pre-Charge Length - (m)	3 x 10m	4 x 10m	5 x 10m	5 x 10m
	Additional Refrigerant Charge - (g/m)	15	15	15	15
Minimum Field Pipe Length - (m)	1 indoor unit	9	12	15	15
Maximum Field Pipe Length - (m)	For all rooms	45	60	60	60
	For 1 indoor unit	30	35	35	35
Maximum Vertical Height Differential (m) included in max length	From OD unit to ID unit	15	15	15	15
	From ID unit to ID unit	10	10	10	10
Outdoor Unit Connections	Liquid Pipe - mm (inch)	3 x 6.35 (1/4)	4 x 6.35 (1/4)	5 x 6.35 (1/4)	5 x 6.35 (1/4)
	Gas Pipe - mm (inch)	3 x 9.52 (3/8)	3 x 9.52 (3/8) + 1 x 12.7 (1/2)	4 x 9.52 (3/8) + 1 x 12.7 (1/2)	3 x 9.52 (3/8) + 2 x 12.7 (1/2)
Adaptors to connect field pipe are supplied with outdoor (MRC) unit		Yes	Yes	Yes	Yes
Wiring Method		Hardwire to Outdoor			

Foot Notes 1-9

1. EER Rated = Energy Efficiency Ratio (Rated Capacity Cooling, Rated Input Power Cooling)
2. COP Rated = Coefficient of Performance (Rated Capacity Heating, Rated Power Heating)
3. Maximum FLA based on the following combination:
MRC-071AS-3 + BRE-026BS + BRE-035BS + BRE-052BS
MRC-100AS-4 + BRE-026BS (x3) + BRE-035BS
MRC-110AS-5 + BRE-026BS (x3) + BRE-035BS (x2)
MRC-135AS-5 + BRE-026BS + BRE-035BS (x3) + BRE-052BS
Each installation will require calculation of selected combination (Outdoor + Indoor/s) for correct Full Load Amps.
4. Based on MEPS registered combination.
5. Refer to AS/NZS 3000 'Australian/New Zealand Wiring Rules' for more details.

6. Refer to Catalogue Unit Weight Distribution Guide section for details of weight points.
7. Sound Pressure Level at 1m distance is determined as the measured sound pressure at 1m perpendicular to the coil side of the condenser.
8. Determination of Sound Power Levels of Noise Sources, AS1217.2 - Precision Methods for Broad-Band Sources in Reverberation Rooms.
9. When Demand Response capability option is chosen, the air conditioner will be fully compliant with AS4755.3 in the following modes: DRM 1, 2, 3

Important Notes:

- The Local Electricity Supply Authority may require limits on - starting current, running current and voltage drop, please check prior to purchase.
- When the outdoor temperature exceeds the rated conditions, the cooling/heating capacities may decrease the rated nett values.
- Specifications subject to change without notice.

Technical Information (Applicable Indoor Models)										
		Wall Hung Split				Bulkhead				Mini-Cassette
INDOOR MODEL		WRE-026CS	WRE-035CS	WRE-050CS	WRE-072CS	BRE-026BS	BRE-035BS	BRE-052BS	BRE-071BS	MRE-035AS
Moisture Removal (L/hr)		1.6	1.7	2.6	2.3	N/A	N/A	N/A	N/A	N/A
IP Rating		IP20								
Airflow Range	Boost	250		240	370	N/A	N/A	N/A	N/A	N/A
	High	180		201	320	167	172	236	361	189
	Medium	120		172	230	150	156	219	333	156
	Low	100		120	190	128	139	180	250	139
Indoor Dimensions	Depth	225		239	275	506	506	674	774	570
	Height	295		315	370	200	200	210	249	260
	Width	795		965	1140	700	700	880	1100	570
Full Load Amps (AS/NZS3823.1.2)- Indoor Unit		0.240	0.275	0.275	0.400	1.200	1.200	1.500	1.500	0.570
Nominal Weight		10.3	10.3	12.3	19.7	18.0	18.0	23.0	30.2	16.0
Indoor Sound Pressure Level (dBA) (Low / Med / High)		30 / 32 / 38			36 / 42 / 47	25 / 33 / 38	25 / 33 / 38	37 / 39 / 40	38 / 40 / 43	34 / 37 / 41
Indoor Unit Connections	Liquid Pipe - mm (inch)	6.35 (1/4)	6.35 (1/4)	6.35 (1/4)	9.52 (3/8)	6.35 (1/4)	6.35 (1/4)	6.35 (1/4)	9.52 (3/8)	6.35 (1/4)
	Gas Pipe - mm (inch)	9.52 (3/8)	9.52 (3/8)	12.7 (1/2)	15.9 (5/8)	9.52 (3/8)	9.52 (3/8)	12.7 (1/2)	15.9 (5/8)	9.52 (3/8)
Field Pipe Size	Liquid Pipe - mm (inch)	6.35 (1/4)	6.35 (1/4)	6.35 (1/4)	9.52 (3/8)	6.35 (1/4)	6.35 (1/4)	6.35 (1/4)	9.52 (3/8)	6.35 (1/4)
	Gas Pipe - mm (inch)	9.52 (3/8)	9.52 (3/8)	12.7 (1/2)	15.9 (5/8)	9.52 (3/8)	9.52 (3/8)	12.7 (1/2)	15.9 (5/8)	9.52 (3/8)

Features										
Remote Controller - WRE2621		N/A	N/A	N/A	N/A	Optional	Optional	Optional	Optional	Optional
Remote Controller - RC-02		Yes	Yes	Yes	Yes	N/A	N/A	N/A	N/A	N/A
Wired Wall Controller - WC-02		Optional	Optional	Optional	Optional	Yes	Yes	Yes	Yes	Yes
EasyConnect Wi-Fi	WUK-WH1	Optional	Optional	Optional	Optional	N/A	N/A	N/A	N/A	N/A
	WUK-CAC1	N/A	N/A	N/A	N/A	Optional	Optional	Optional	Optional	Optional
Follow Me Function		Yes	Yes	Yes	Yes	Yes	Yes	Yes	Yes	Yes
Sleep		Yes	Yes	Yes	Yes	Optional	Optional	Optional	Optional	Optional
Boost		Yes	Yes	Yes	Yes	N/A	N/A	N/A	N/A	Yes
Auto Defrost Function		Yes	Yes	Yes	Yes	Yes	Yes	Yes	Yes	Yes
Timer On/Off		Yes	Yes	Yes	Yes	Yes	Yes	Yes	Yes	Yes
7-Day Scheduler / Weekly timer		Optional	Optional	Optional	Optional	Yes	Yes	Yes	Yes	Yes
Dehumidification		Yes	Yes	Yes	Yes	Yes	Yes	Yes	Yes	Yes
Return Air Sensor		N/A	N/A	N/A	N/A	Yes	Yes	Yes	Yes	Yes
External Static Pressure Settings		N/A	N/A	N/A	N/A	Yes	Yes	Yes	Yes	Yes
Drain Pump		N/A	N/A	N/A	N/A	Yes	Yes	Yes	Yes	Yes
Bottom Return Air connection		N/A	N/A	N/A	N/A	Optional	Optional	Optional	Optional	Optional
Outside Air Intake		N/A	N/A	N/A	N/A	Optional	Optional	Optional	Optional	Optional
Hanging Brackets		N/A	N/A	N/A	N/A	Yes	Yes	Yes	Yes	Yes
Multi Directional Airflow	Up - Down	Automatic	Automatic	Automatic	Automatic	N/A	N/A	N/A	N/A	N/A
	Left - Right	Automatic	Automatic	Automatic	Automatic	N/A	N/A	N/A	N/A	N/A
Hydrophilic Aluminium Coil Protection	Indoor	Yes	Yes	Yes	Yes	Yes	Yes	Yes	Yes	Yes
	Outdoor	Yes	Yes	Yes	Yes	Yes	Yes	Yes	Yes	Yes
Louvre Memory		Yes	Yes	Yes	Yes	N/A	N/A	N/A	N/A	N/A
Indoor Fan Speed		12-Speed				3-Speed	3-Speed	3-Speed	3-Speed	3-Speed
Auto Restart Function		Yes	Yes	Yes	Yes	Yes	Yes	Yes	Yes	Yes
Fault Alarm Output Port		Optional	Optional	Optional	Optional	Yes	Yes	Yes	Yes	Yes
Remote On/Off		Optional	Optional	Optional	Optional	Yes	Yes	Yes	Yes	Yes
Left-Right Hand Drain Connection		Yes	Yes	Yes	Yes	Yes	Yes	Yes	Yes	Yes
Mute Operation		Yes	Yes	Yes	Yes	N/A	N/A	N/A	N/A	N/A
Easy Lift filter		Yes	Yes	Yes	Yes	N/A	N/A	N/A	N/A	N/A
Ioniser		Yes	Yes	Yes	Yes	N/A	N/A	N/A	N/A	N/A

Rated Conditions:

Cooling: 35°C DB Outdoor / Air Entering Indoor 27°C DB, 19°C WB
Heating: 7°C DB, 6°C WB Outdoor / Air Entering Indoor 20°C DB

Warranty:

For full terms and conditions of ActronAir warranty, please refer to warranty terms document - www.actronair.com.au





ActronAir

That's better. That's Actron.

actronair.com.au

1300 522 722