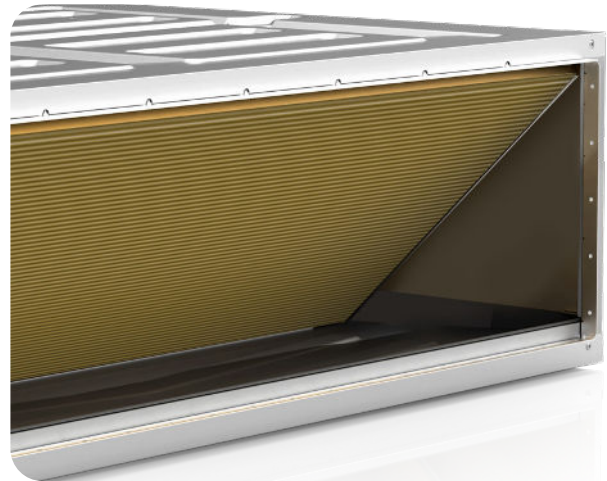


ASPIRE

Perfect solution for tight spaces

Designed to fit your home, and your lifestyle.

Not all homes have generous ceiling space, but that should not limit your comfort. ASPIRE's compact indoor unit is designed to fit into spaces as low as 245mm, making it ideal for modern homes, townhouses, or renovations where ceiling space is limited. Enjoy the benefits of ducted comfort without compromising on space or design.



Comfort that Adapts with you.

ASPIRE intelligently adjusts its airflow in real time to keep your home feeling just right. Using smart air volume control, it fine tunes the fan speed to maintain steady airflow, even as room conditions or air pressure change, so you enjoy consistent comfort in every space.



Built for Aussie Conditions

Built to handle our country's toughest weather extremes, ASPIRE delivers reliable comfort from -20°C to 50°C.



Smarter Indoor Design

The indoor unit can be installed horizontally or vertically, offering more flexibility to achieve a perfect fit.



Effortless Maintenance, Cleaner Air

ASPIRE's magnetic filters make cleaning simple. Just snap them off, clean, and reattach to support cleaner air and help the system continue performing at its best.

Personalised Comfort in Every Room.

Only heat or cool the rooms you're using. When paired with the NEXUS Touch Controller, ASPIRE lets you divide your home into personalised zones, each with its own temperature control. Enjoy customised comfort in every room while reducing energy use and running costs.





R32 LOW GWP REFRIGERANT

ASPIRE

Perfect solution for tight spaces

Breathe Cleaner, Healthier Air.

ASPIRE's built in i-Clean Self Cleaning Technology helps keep the air in your home cleaner and healthier, while reducing the need for frequent servicing. The system works to remove dust and debris from the indoor unit, supporting better indoor air quality and helping the system operate efficiently, so your family can enjoy greater everyday comfort.



Sleep Soundly, Save Energy.

ASPIRE's Sleep Mode gradually adjusts the temperature by 1°C each hour for the first two hours, then maintains your preferred setting for seven hours before turning off automatically. By gently adapting to your body's natural sleep rhythm, it helps you rest comfortably through the night while reducing unnecessary energy use.



Efficient Technology

Powered by an inverter rotary compressor and advanced DC technology, ASPIRE adapts to your lifestyle and the seasons, delivering consistent comfort with energy-saving efficiency.



Fast Comfort, On Demand

When the weather turns extreme, Turbo Mode boosts output for rapid heating or cooling — delivering powerful comfort right when you need it most.

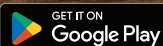


Comfort that Stays with you.

Follow Me feature uses the remote control to sense the temperature where you are, not just at the unit, keeping you comfortable no matter where you are in the room.

Smart Control, Your Way.

With ASPIRE, you're always in control. Choose the sleek wired wall controller with built in Wi Fi, the intuitive NEXUS TOUCH controller, or the Easy Connect app on your smartphone. Easily adjust temperatures, set schedules, and create the perfect comfort wherever you are.



ASPIRE

Your Home, Your Climate, Your Way.

Specification Tables

Features	
Inverter Single Rotary Compressor	2-Way Indoor Unit Installation (Vertical & Horizontal) - 7kW to 14kW
Powder Coated Panels - Outdoor	Splittable Indoor Unit - 17kW Unit Only
Hydrophilic Gold Coating Indoor & Outdoor Coils	Rear & Bottom Air Intake Options - 7kW to 14kW
Self-Diagnosis & Auto Protection	i-Clean Feature
Fire Proof Electrical Box - Indoor & Outdoor	Real Time Constant Airflow
Return Air Sensor Included in Unit	Dry Mode
Incorporated Drain Pump with 1000mm lift	Eco Mode
Magnetic Filter - 7kW to 14kW	Demand Response Ready

Controls Features



Controller	NEXUS TOUCH	WC-03	RC-02
Colour Options	White	White	White
Touch Screen	Yes	-	-
Onboard Temperature Sensor	Yes	Yes	-
Optional Remote Sensor	Yes	-	-
Set Point Displayed	Yes	Yes	Yes
Auto Heat / Cool Change Over	Yes	Yes	Yes
Error Code Display	Yes	Yes	-
24 Hour Timer	Yes	Yes	Yes
7 Day Scheduling	Yes	Yes	-
Turbo Mode	Yes	Yes	Yes
Eco Mode	Yes	Yes	Yes
Dry Mode	Yes	Yes	Yes
Dual Control Capability - Optional (Using Mimic Logic)	Yes	Yes	-
Filter Clean Reminder	Yes	Yes	-
Memory for Auto Restart after Power Failure	Yes	Yes	-
Zoning Capabilities	Yes	-	-
Damper Settings (when paired with remote sensor)	Yes	-	-
Set Temperature Lock	Yes	Yes	-
Child Lock	Yes	Yes	-
Self Clean (i-Clean)	Yes	Yes	-
Built-In Wi-Fi	Yes	Yes	-
OTA (Over The Air Updates)	Yes	-	-
Remote Sensor			
Maximum Number of Sensors	16	-	-
Choice of Colour	White	-	-
Individual Temperature Control	Yes	-	-
Easyconnect app			
Zone On/Off	Yes	-	-
Smart Assistant Compatible (Google Home, Alexa)	Yes	Yes	-
Geo-Fencing	Yes	Yes	-



Specification Tables

Technical Specifications						
Model	Outdoor	LRC-07IDS	URC-100DS	URC-125DS	URC-140DS	LRC-170DS
	Indoor	LRE-07IDS	LRE-100DS	LRE-125DS	LRE-140DS	LRE-170DS
Operating Capacity (kW)	⁽¹⁾ Cooling (Min / Rated / Max)	0.85 / 7.30 / 9.09	2.30 / 10.20 / 11.61	3.15 / 12.60 / 17.00	3.45 / 14.0 / 17.29	3.60 / 17.0 / 19.34
	⁽¹⁾ Heating (Min / Rated / Max)	2.33 / 7.50 / 10.26	2.70 / 12.0 / 12.90	3.22 / 14.50 / 18.70	3.31 / 15.50 / 19.64	3.90 / 18.0 / 19.64
⁽⁴⁾ Input Power (kW)	Cooling	2.13	3.05	3.76	4.13	5.10
	Heating	1.84	3.00	3.55	3.82	4.56
Efficiency	⁽²⁾ EER / AEER	3.41 / 3.39	3.34 / 3.30	3.34 / 3.32	3.39 / 3.36	3.33 / 3.13
	⁽³⁾ COP / ACOP	4.07 / 4.04	4.00 / 3.95	4.08 / 4.05	4.05 / 4.02	3.94 / 3.92
	TCSPF Residential (Hot / Avg. / Cold)	6.08 / 5.51 / 5.84	5.61 / 5.00 / 5.18	5.81 / 5.24 / 5.50	5.82 / 5.28 / 5.55	5.55 / 5.08 / 5.34
	HSPF Residential (Hot / Avg. / Cold)	5.15 / 4.50 / 4.04	5.05 / 4.34 / 3.71	5.11 / 4.51 / 4.02	5.12 / 4.48 / 4.00	5.00 / 4.31 / 3.72
Power Supply		220 - 240V / 1Ph / 50Hz				
Interconnecting Wire (mm ²)		1.0 x 4	1.0 x 4	1.5 x 4	1.5 x 4	1.5 x 4
⁽⁵⁾ Maximum Running Current (Full Load Amps)		16	21	31	31	31
⁽⁵⁾ Rated Load Amps	Cooling	9.3	13.5	16.6	18.3	22.0
	Heating	8.2	13.5	15.4	17.2	20.0
⁽⁶⁾ Circuit Breaker Amps (Suggested)		20	25	32	32	32
IP Rating	Outdoor / Indoor	IPX0 / IPX4				
Indoor Dimensions	Height (mm)	245	245	300	300	380
	Width (mm)	1000	1200	1200	1200	1400
	Depth (mm)	750	750	750	750	870
Indoor Weight	Net (kg)	31.5	40.5	45	45	67
Spigot Dimension	Supply - W x H (mm)	827 x 178	1027 x 178	1027 x 233	1027 x 233	1152 x 295
	Return (Under) - W x H (mm)	892 x 212	1092 x 212	1092 x 267	1092 x 267	n/a
	Return (Rear) - W x H (mm)	892 x 212	1092 x 212	1092 x 267	1092 x 267	2 x 400 (oval)
Airflow Volume (l/s)	Turbo / High / Med / Low	472 / 417 / 361 / 278	639 / 556 / 500 / 417	944 / 806 / 694 / 528	944 / 806 / 694 / 528	1111 / 1000 / 833 / 667
External Static Pressure	Range (Pa)	0 ~ 160	0 ~ 160	0 ~ 200	0 ~ 200	0 ~ 200
Drainage Water Pipe Diameter (mm)		OD Ø25mm				
Outdoor Dimensions	Height (mm)	673	810	975	1333	1333
	Width (mm)	890	946	980	952	952
	Depth (mm)	342	410	415	415	415
Outdoor Weight	Net (kg)	44.0	75.2	89.0	93.0	94.0
Compressor Type		Inverter Single Rotary				
Refrigerant Type		R32				
Pre-Charge	Amount (g)	1500	2600	3500	3600	3800
	Length (m)	20	20	20	20	20
Connections	Connection Type	Flared				
	Liquid	Ø9.52	Ø9.52	Ø9.52	Ø9.52	Ø9.52
	Gas	Ø15.90	Ø15.90	Ø15.90	Ø15.90	Ø19.0
Maximum Piping	Length (m)	50	75	75	75	75
	Height (m)	25	30	30	30	30
Minimum Piping	Length (m)	3	3	3	3	3
⁽⁷⁾ Outdoor Sound Pressure Level @ 1m dB(A)		61	62	64	63.5	63
⁽⁸⁾ Outdoor Sound Power Level dB(A)		65.7	68.3	70.7	75.1	71.6
Operating Range	Cooling °C	-15 ~ 50°				
	Heating °C	-20 ~ 24°				
	Dry °C	0 ~ 50°				
Available Control Options (Sold Separately)		WC-03 WTC-01 RC-02				

Foot Notes

⁽¹⁾ Measured and tested in accordance with AS/NZS 3823.1.4. Rated Load Amps shown above is based on MEPS representative outdoor and indoor unit combinations.

⁽²⁾ EER = Energy Efficiency Ratio (Rated Cooling / Heating Capacity)

⁽³⁾ COP = Coefficient of Performance (Rated Cooling / Heating Capacity)

⁽⁴⁾ Input power includes indoor fan kW.

⁽⁵⁾ As per standards of the performance of electrical appliances AS/NZS 3823.1.4.

⁽⁶⁾ Refer to AS / NZS 3000 "Australian / New Zealand wiring Rules" for more details.

⁽⁷⁾ Outdoor sound pressure level is determined in an anechoic chamber and may differ once the unit is installed due to environment conditions.

⁽⁸⁾ Determination of Sound Power Levels of Noise Sources per AS1217.2.

Rated Conditions

Cooling: 35°C DB Outdoor / Air Entering Indoor 27°C DB, 19°C WB

Heating: 7°C WB Outdoor / Air Entering Indoor 20°C DB

Important Notes:

- The Local Electricity authority may require limits on starting current, running current and voltage drop, please check prior to purchase.
- When the outdoor temperature exceeds the rated conditions, the cooling/heating capacities may decrease the rated nett values.
- Specifications subject to change without notice

Disclaimer

Specifications and product details are subject to change without notice. The manufacturer reserves the right to update or modify features, dimensions, or performance at any time due to ongoing improvements or technological advancements.

Warranty:

For full terms and conditions of ActronAir warranty, please refer to warranty terms document.

